



Xerbath's TableTopModels

Orc Fort basic set

STL-Files scale 1:72,
usable 20mm -28mm
for 3D printing,

consisting of:

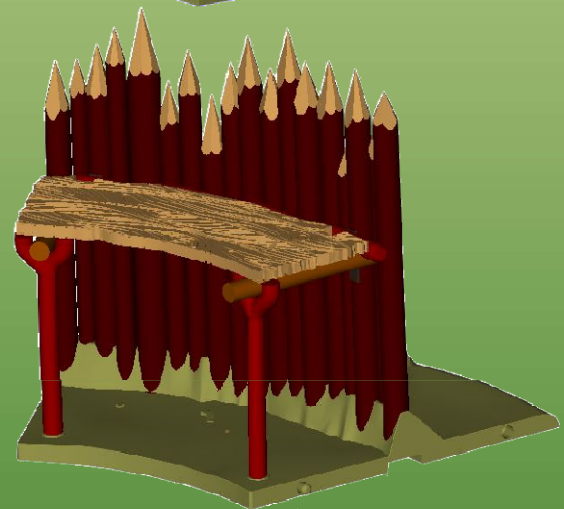
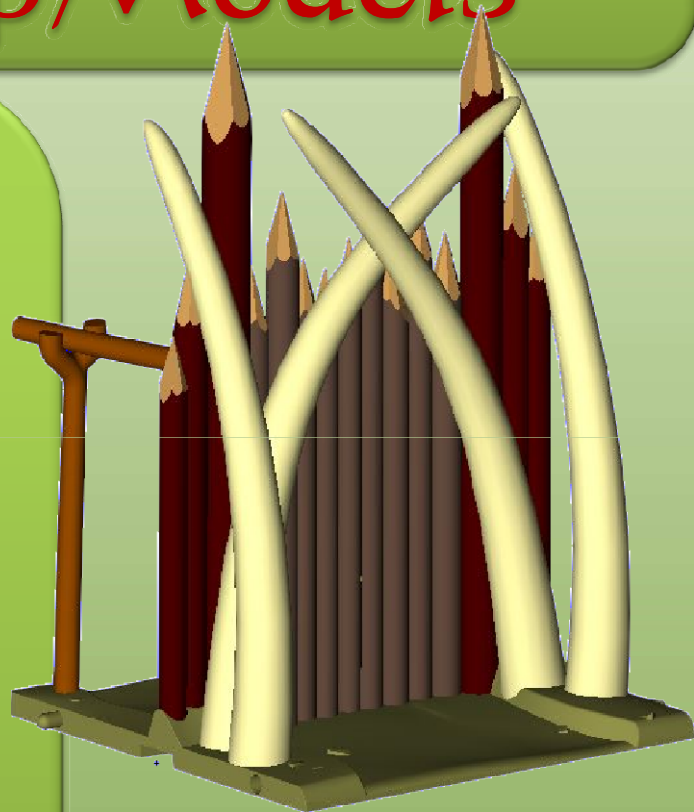
gate with movable doors,

straight wall segment

2 different 45° curved segments

90° curved segment

ladders, fittings





Xerbath's TableTopModels

This set contains the Basis Set to create an
fantasy Orc Fort :

Of course you can use the palisade-walls also for
medieval fortifications, tribal villages, frontier
forts and stuff like this.

An alternative gate is seperatly available, other
modells will come in future

The set consists of STL-Files, made for 3D
printing, to used at table-top-gaming
scale 1:72, but can easily been scaled to 20mm -
28mm

I printed with with an Prusa I3, no support, PLA
at 220°C nossle temperature ,
60°C to 50°C heatbed and 0.1mm steps

Some Files are generated with additional pads
diameter 15mm at the ends. They are easily to
remove, but usefull to reduce warping.

Orc_Fort_Gate:

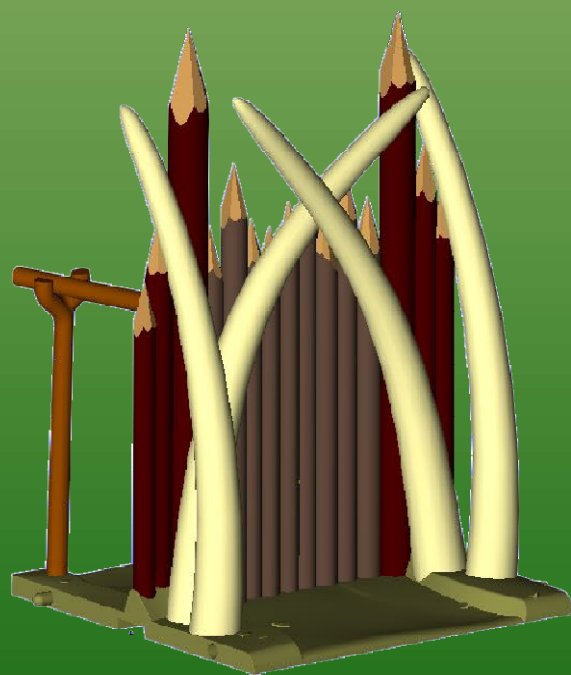
You need to use those parts to print:

Orc_Fort_gate_wall_base

Orc_Fort_gate_fittings (to be glued)

Orc_Fort_gate_door Orc_Fort_gate_door_hinges

There are different hinges available – I propose to
thoose those with holes to be connected with a
nadapted toothpicker



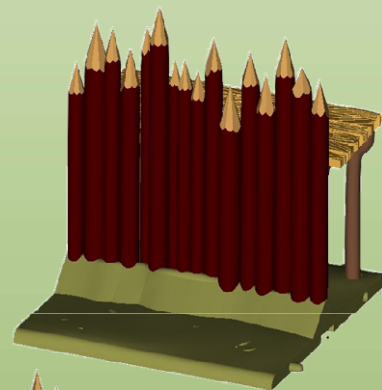
You will find some additional features and
versions, try!



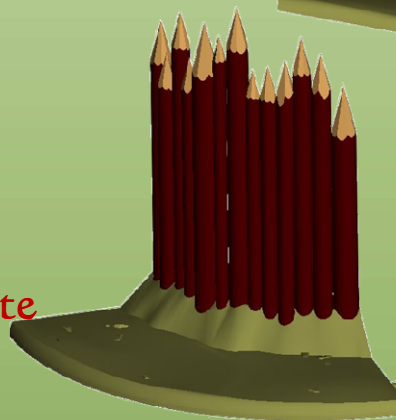
Xerbath's TableTopModels

You need to use those parts to print:

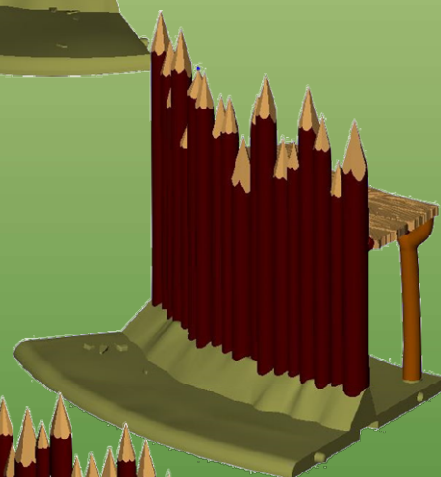
Orc_Fort_straight
Orc_Fort_str_wall
Orc_Fort_str_fittings_split_cut
Orc_Fort_str_planks_1_cut



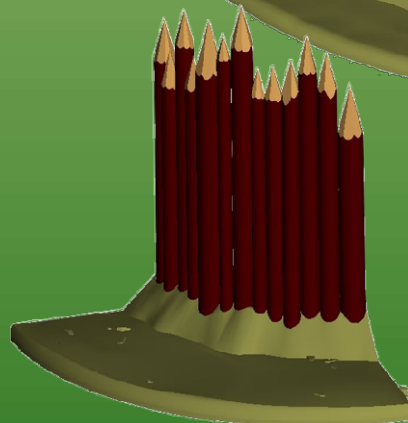
Orc_Fort_45_a (45°edge)
Orc_45_a_wall
Orc_45_a_fittings_cut_split_complete



Orc_Fort_45_b (45°edge)
Orc_45_b_Wall
Orc_45_b_fittings_split_cut_complete



Orc_Fort_90
Orc_Fort_90_wall
Orc_Fort_90_platform
Orc_Fort_90_fork_split (to be glued)



You will find some alternative, separated or
general usable parts in the directories